

Beechcraft Corporation

KING AIR 90 SERIES MAINTENANCE MANUAL

- b. Perform the Checks/Tests After Installation procedure for the STANDBY POWER SUPPLY (Ref. the BF Goodrich Aerospace Service Letter SL-80J or later).
- c. Remove electrical power from the airplane.

ELECTRONIC STANDBY INSTRUMENT SYSTEM (ESIS) STANDBY POWER SUPPLY (PS-835D) PREFLIGHT CHECK

NOTE: Preflight check is optional for this airplane because it has remote test capability. The PS-835D standby power supply is located in the right nose avionics bay (Ref. [Figure 203](#)).

- a. Remove electrical power from the airplane.
- b. Remove the right avionics compartment door.
- c. Perform the PREFLIGHT CHECK procedure for the PS-835D standby power supply (Ref. BF Goodrich Aerospace Service Letter SL-80J or subsequent).
- d. Install the right avionics compartment door.
- e. Apply electrical power to the airplane.

ELECTRONIC STANDBY INSTRUMENT SYSTEM (ESIS) STANDBY POWER SUPPLY (PS-835D) PERIODIC 3 TO 6 MONTH CHECK

NOTE: The Standby Power Supply periodic 3 to 6 month check is required (Ref. [Figure 203](#)).

- a. Remove electrical power from the airplane.
- b. Remove the right avionics compartment door.
- c. Perform the PERIODIC 3 TO 6 MONTH Check Procedure for the PS-835D standby power supply (Ref. BF Goodrich Aerospace Service Letter SL-80J or subsequent).
- d. Install the right avionics compartment door.

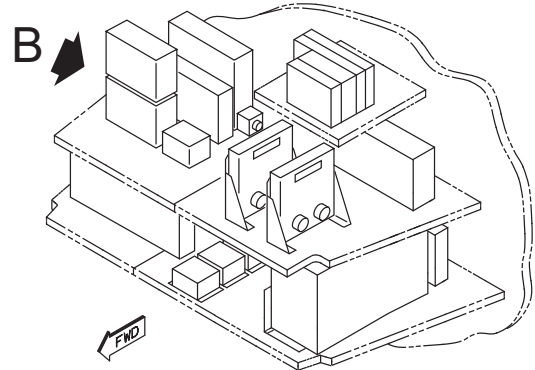
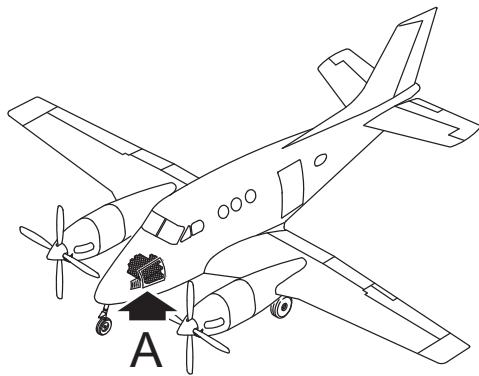
ELECTRONIC STANDBY INSTRUMENT SYSTEM (ESIS) STANDBY POWER SUPPLY (PS-835D) CAPACITY TEST

NOTE: The Standby Power Supply Annual Capacity Testing check is required. The PS-835D (ESIS) Standby Power Supply is located in the right nose avionics bay (Ref. [Figure 203](#)).

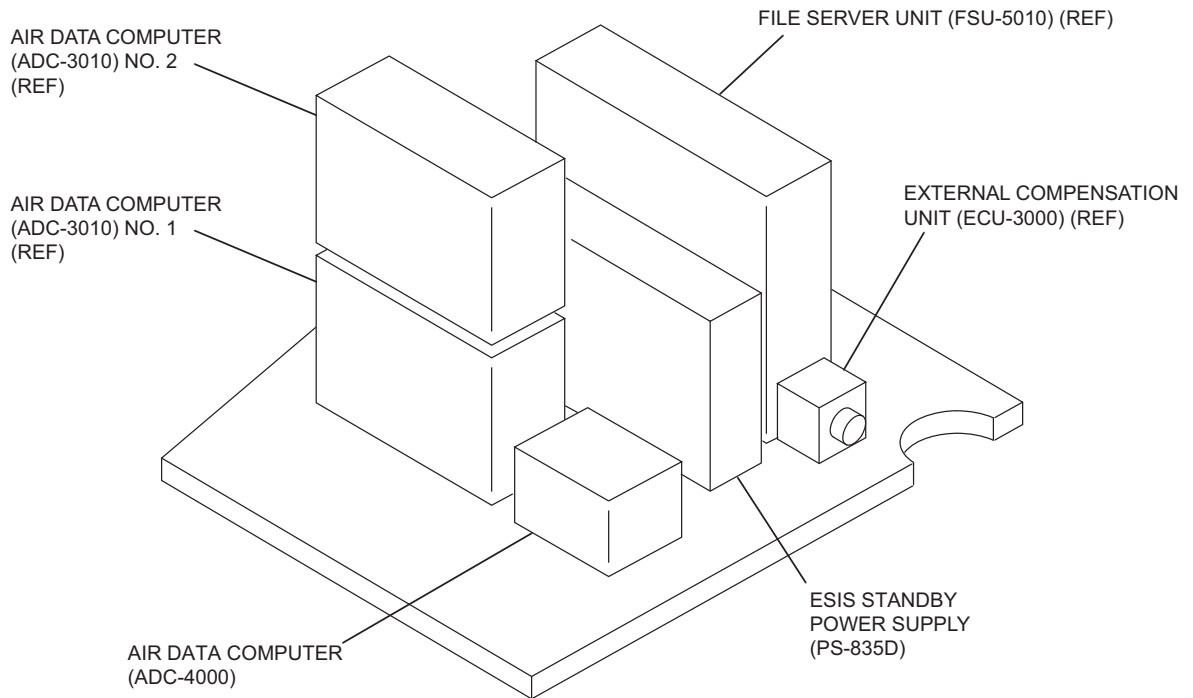
- a. Remove electrical power from the airplane.
- b. Remove the right avionics compartment door.
- c. Perform the CAPACITY TESTING procedure for the PS-835D standby power supply (Ref. BF Goodrich Aerospace Service Letter SL-80J or subsequent).
- d. Install the right avionics compartment door.

Beechcraft Corporation

KING AIR 90 SERIES MAINTENANCE MANUAL



DETAIL A



DETAIL B

HA34B
985782AA.AI

ESIS Air Data Computer (ADC-4000) and Standby Power Supply (PS-835D)
Figure 203